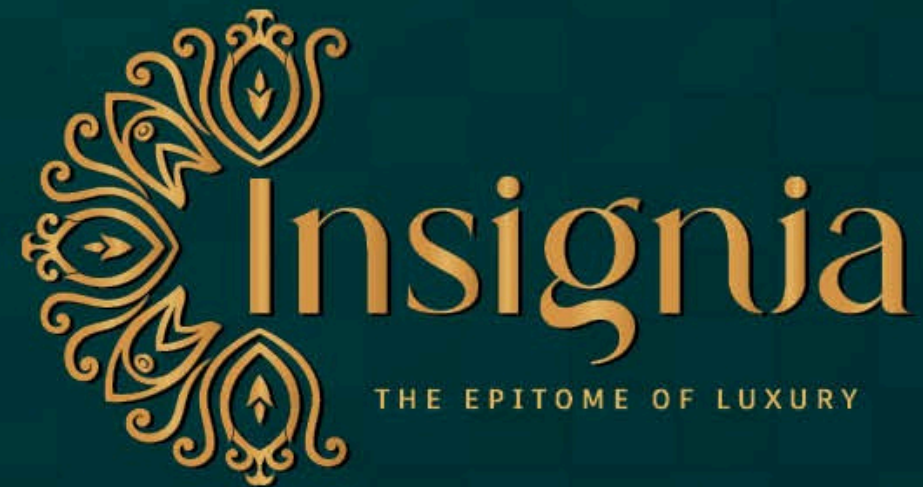


Approved By:



Promoting by



Ultra Luxury Triplex Villas & Villaments
@ Tadepalli, Vijayawada.

Handcrafted By:

LM PROPERTIES

LM PROPERTIES

Upgrading your home and your life.

LM Properties is a distinguished real estate company committed to innovation, integrity, and superior quality. We specialize in creating exceptional residential and commercial properties that redefine urban living and business environments. Our flagship residential project, Spring Fields Villas, offers luxurious homes nestled in serene greenery, providing a peaceful retreat with excellent connectivity to urban centers. In the commercial sector, LM Square stands out as a strategically located development designed to foster business growth and success. At LM Properties, we believe in crafting spaces that not only meet but exceed our clients' expectations, enhancing lifestyles and fostering lasting connections.



Elevating your living, elevating your lifestyle.

This development boasts a selection of 38 spacious villas, each available in 205 sq. yds. and 270 sq. yds. configurations. These villas have been thoughtfully designed to offer both privacy and open spaces, ensuring a perfect balance between comfort and functionality. For those who desire the elegance of villa living with the convenience of an apartment, 15 unique villaments (villas transformed into luxury apartments) are available, offering the best of both worlds. Whether you choose a villa or villament, every residence is crafted with the finest attention to detail, ensuring a peaceful and luxurious retreat for you and your family.



4 Acres Community



Avenue Plantation



38 Villas



15 Villaments



Play Area



Club House



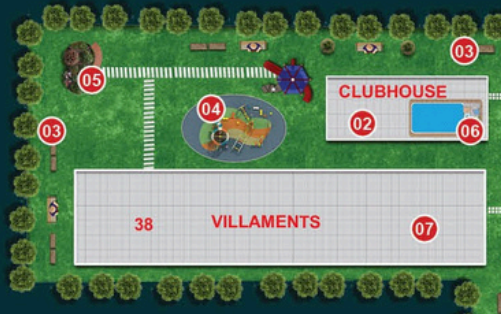
Landscaping



Insignia
THE EPITOME OF LUXURY



Master Layout Plan



Your journey to a new and Improved life starts now

Legend

- 1. Entrance / Exit
- 2. Club House
- 3. Multiple Sitting Area
- 4. Children's Play Area
- 5. Designer Landscape
- 6. Rooftop Swimming Pool
- 7. Villaments
- 8. Lawn
- 9. Gazebo
- 10. Sand Pit/ Play Area

Insignia
THE EPITOME OF LUXURY



Ground Floor Plan



First Floor Plan



Second Plan



Area Statement

Ground Floor	-	1505.50 sft.
First Floor	-	1505.50 sft.
Second Floor	-	1505.50 sft.
Staircase & Lift Headroom	-	239.25 sft.
Total Area	-	4755.75 sft.



270 Sq. Yds
EAST FACING VILLA



270 Sq. Yds
WEST FACING VILLA



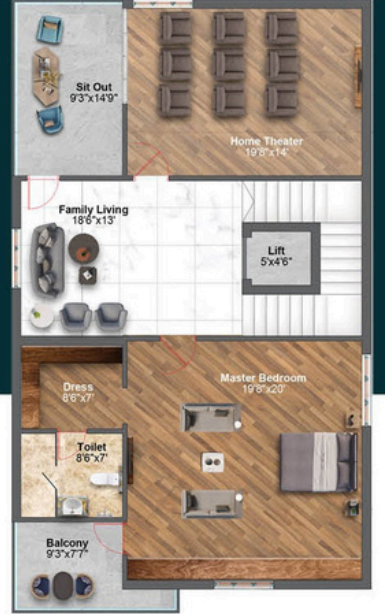
Ground Floor Plan



First Floor Plan



Second Plan



Area Statement

Ground Floor	-	1505.50 sft.
First Floor	-	1505.50 sft.
Second Floor	-	1505.50 sft.
Staircase & Lift Headroom	-	239.25 sft
Total Area	-	4755.75 sft.



Where every corner is dedicated to

Family



Come, discover a lifestyle that blends nature, luxury, and modern living in a way that is truly unique. Your dream home awaits you here – where every day is a celebration of living well.



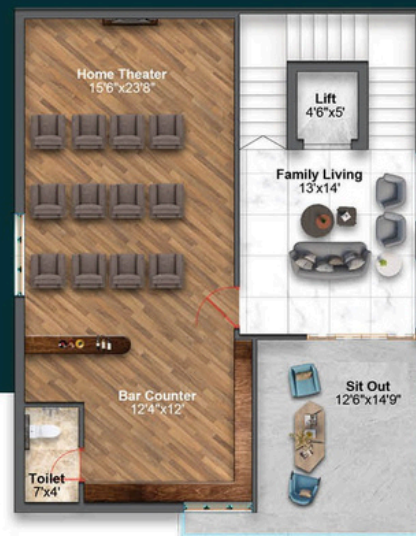
Ground Floor Plan



First Floor Plan

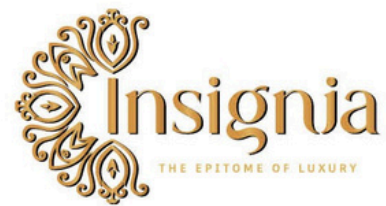


Second Plan



Area Statement

Ground Floor	-	1161.59 sft.
First Floor	-	1161.59 sft.
Second Floor	-	1161.59 sft.
Staircase & Lift Headroom	-	230.18 sft.
Total Area	-	3714.95 sft.



205 Sq. Yds
EAST FACING VILLA



205 Sq. Yds
WEST FACING VILLA



Ground Floor Plan



First Floor Plan



Second Plan




Area Statement

Ground Floor	-	1153.11 sft.
First Floor	-	1153.11 sft.
Second Floor	-	881.86 sft.
Staircase & Lift Headroom	-	223.51 sft.
Total Area	-	3682.87 sft.





 **Insignia**
THE EPITOME OF LUXURY

A dream of sunsets and
Perfection



The charm of an apartment, the
Luxury
of a villa



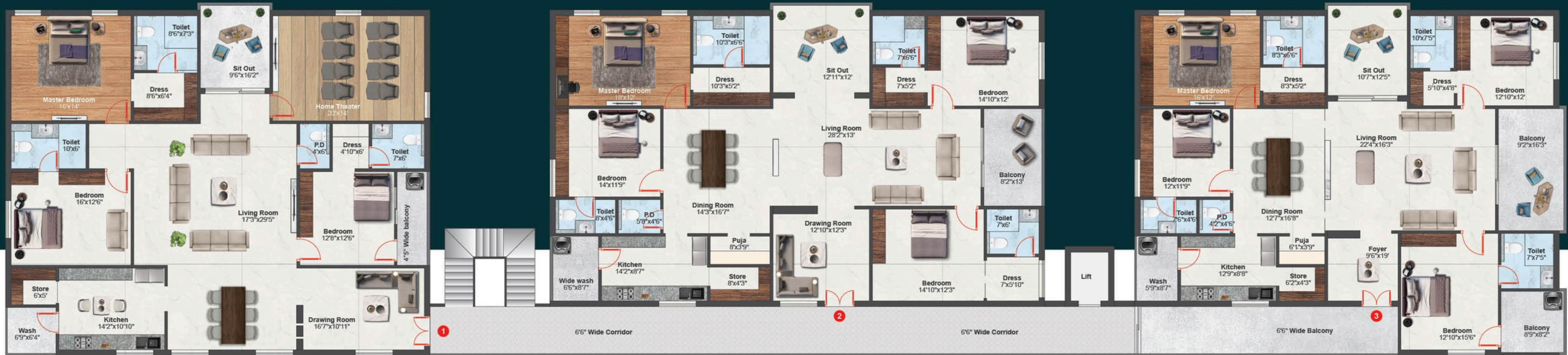
The perfect combination for

Perfect days



Seeking both convenience and luxury? A high-end apartment or townhouse offers the perfect. Insignia's villaments offer the perfect blend of both, combining the best aspects of each. They're also ideal for joint families who desire privacy and connection, offering ample space for everyone to live comfortably while still feeling close. Experience the epitome of modern living with Insignia's villaments.





VILLAMENT

Typical Floor Plan

Your safety and comfort are our top priority. This community offers 100% power backup for all common areas, ensuring that essential services are uninterrupted. Additionally, 24x7 CCTV surveillance throughout the property provides peace of mind, knowing that your home is secure at all times.



Area Statement

Villament No.	Facing	Unit	Area in sft.
01.	North	4 BHK	3500.00 sft.
02.	East	4 BHK	3500.00 sft.
03.	East	4 BHK	3500.00 sft.



A place to create those beautiful
Memories

Come together in our club house with it's multiple amenities and watch magic unfold. Designed to perfection, with meticulously thought out amenities. Our club house is the perfect place to relax, rewind or host your best yet parties!



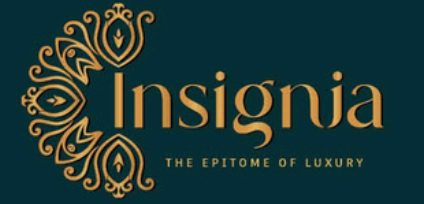
Club House AMENITIES

- Banquet Hall
- Reception and working lounge
- Guest Rooms
- Maintenance Office
- GYM
- Yoga/Aerobics Desk
- Library
- Indoor Games
- Rooftop Swimming Pool



Sign yourself up, for a
Better life

The sign you need, to bring your family and yourself to a world which celebrates and honors the best parts of life. A world where health, greenery and community are upheld to the highest esteem.



Yoga Desk



Party Lawn



Elders Sitting Area



Landscape Garden



Rooftop Swimming Pool



Children's Play Area



Multipurpose Hall



24x7 cctv Surveillance System



100% Power Backup For Common Areas



World class Drainage Facility





Specifications

STRUCTURE
RCC-framed structure.
Solid cement block masonry for peripheral and internal walls.

PLASTERING & PAINTING
Internal walls with smooth plaster finish and emulsion paint
External walls with water-proof plaster and exterior grade emulsion paint.

DOORS
Main Door: Veneer finish with solid wood frame with designer flush door shutter.
Other Doors: Veneer doors.
Dorset brand hardware.

FLOORING
Vitrified tiles for foyer, living, dining and granite for staircase.
vitrified tiles / flamed granite for kitchen and utility area
Wooden laminate or Vitrified Tiles for all bedrooms and family room.
Anti-skid ceramic tiles for balcony and toilets.

KITCHEN
Water point & power provisions.

WINDOWS
Three-track UPVC shutters / aluminum windows with clear glass

BATHROOM
Ceramic glazed tiles dado up to 8 feet height
White EWC and washbasin with granite countertops in all bathrooms, except servant toilet
CP fittings and accessories
Health faucet in all toilets, except servant toilet.
Single lever diverter for all showers & single lever mixer for all washbasins
Provision for exhaust fans in all bathrooms.

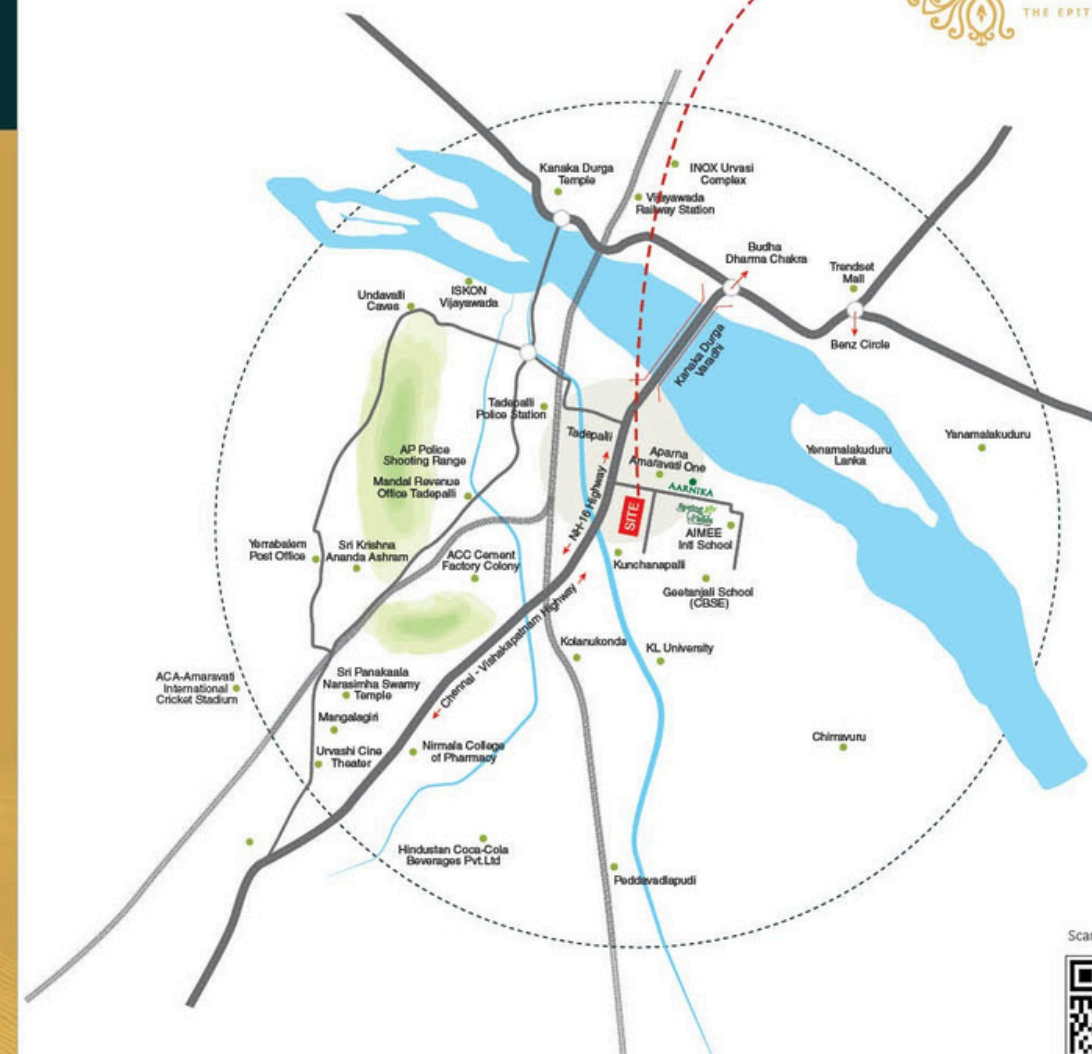
PLUMBING
Good quality CP fittings.
Good quality PVC drainage & storm water pipes.

ELECTRICAL
Concealed wiring with PVC insulated copper wires and modular switches.
Sufficient power outlets and light points Up to 8 KW power for all villas.
Backup power of up to 8 KW to all villas and common services.
TV and telephone points in living, family and all bedrooms.
ELCB and individual meters for all villas.
Provision for AC in all rooms.



LOCATION MAP

(Not to Scale)



PROXIMITY

- CONNECTIVITY**
- 2 minutes to NH 16 Chennai-Kolkata Highway
 - 7 minutes to Central Bus Stand
 - 10 minutes to Vijaywada Railway Station
 - 10 minutes to Mangalagiri IT Park
 - 20 minutes to Amaravathi
 - 25 minutes to Airport

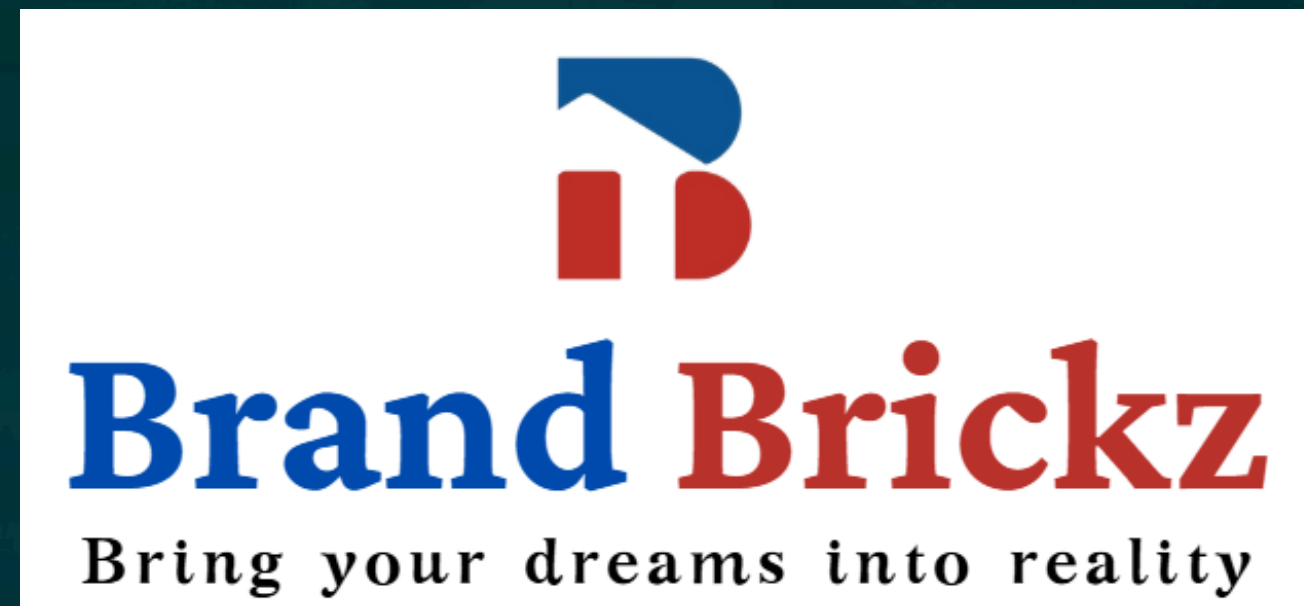
- SHOPPING & ENTERTAINMENT**
- 2 minutes to LM Square
 - 2 minutes to D-Mart
 - 2 minutes to Ratnadeep Super Market
 - 3 minutes to Ushodaya super market
 - 8 minutes to Besant road
 - 10 LM Square Mall
 - 8 minutes to PVP Mall & Cinepolis
 - 10 Minutes to Trendset Mall & Capital cinemas
 - 15 minutes to LEPL Inox Cinemas

- QUALITY EDUCATION**
- 2 minutes to AIMEE Internaital Scool
 - 2 minutes to Geethanjali school
 - 4 minutes to Aravinda School
 - 5 minutes to KL University
 - 10 minutes to NRI Medical College
 - 15 minutes to Nagarjuna Univeristy
 - 20 minutes to SRM & VIT Universities

- MULTI-SPECIALITY HOSPITALS**
- 2 minutes to Manipal Hospital
 - 6 AIIMS Hospital
 - 12 minutes to NRI Hospital

LM PROPERTIES

Promoting by



94 900 272 72

Note : The contents including designs, layouts, amenities, facilities, images displayed/provided, are solely for information purpose and are not intended to constitute solicitation. It is an artistic impression/schematic representation of the project shown and is indicative of the project that can be built. This material does not constitute a contract of any type between the developer/promoter/owner and the recipient. Nothing should be construed to be final. Since the project is under evolution, there is possibility that there may be certain changes in the project as represented in promotional material. Every interested buyer is required to verify all the details independently prior to concluding any decision of buying any unit.